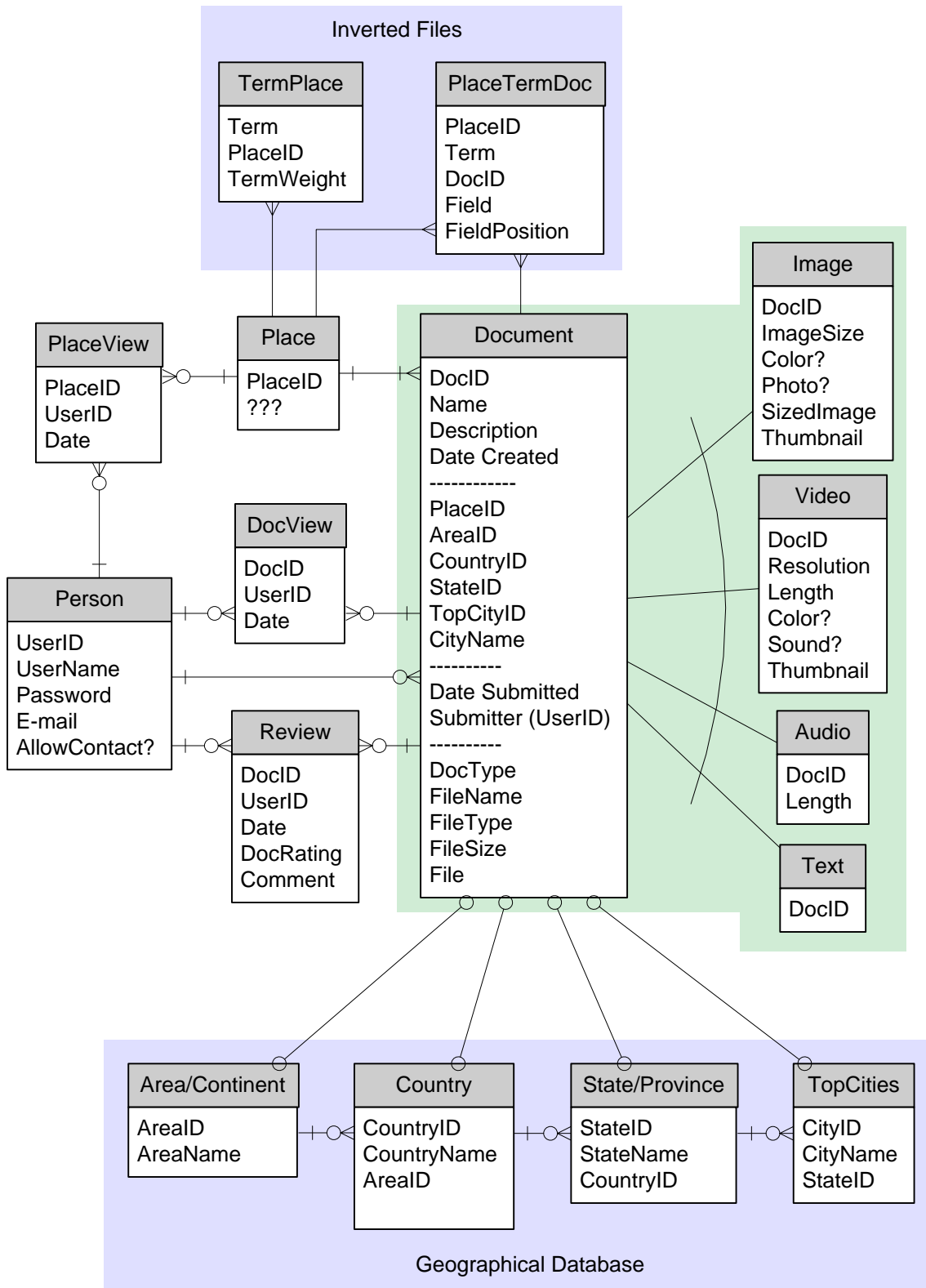


Metadata

There are two inverted files here to be used as indices. The first, TermPlace, allows you to find which places are tied to a particular term. The TermWeight field is a calculated value based on the occurrence of the term in the one or more documents associated with the place. These give you a sorted list of places for a given term.

The second, PlaceTermDoc, is much like the inverted files we've looked at before. Ignore the PlaceID and it's the same fields. The PlaceID organizes all of these things within a place. The idea is that the top-level search is always for a place, using TermPlace. For each place, a second-level search is done using PlaceTermDoc



This document structure (FileType and FileSize on main Document table) assumed text documents would be files rather than just typed or copy & pasted text. I think there are benefits to the file approach, but if we just go with text, FileType and FileSize should probably be moved out to the 3 other subtables.

Results of Search

Hi Bandwidth Version

Results grouped by Place. Ranking done first for Place and then for Document within each Place.

[Add a new place](#)

Pic Thumbnail	Video Thumbnail	Generic Text Image	Add your own See more	
Pic Thumbnail	Pic Thumbnail		Add your own See more	
Pic Thumbnail	Generic Audio Image	Pic Thumbnail	Pic Thumbnail	Add your own See more

Lo Bandwidth Version

[Add a new place](#)

**Title of 1st Document in Place 1,
Doc Type, File Type, File Size, Rating** [Add to this place](#)

Title of 2nd Document in Place 1,
Doc Type, File Type, File Size, Rating [See more of this place](#)

**Title of 1st Document in Place 2,
Doc Type, File Type, File Size, Rating** [Add to this place](#)

Title of 2nd Document in Place 2,
Doc Type, File Type, File Size, Rating [See more of this place](#)

These screens were intended as the first screen you'd see after submitting a search query. It shows a ranked list of places that match your query, and for each place, the top one or more documents for your query. The user should be able to open any of the individual documents here or open a place to see more of the documents associated with it. My thought was that they could also add a document here either by choosing an add button/link for one of the places or the "you don't have my place" add button/link.

Note that this approach assumes that everything revolves around the "place" concept. If you wanted to see some fancy arrangement of pictures by year or something, you would only do that for a single place. Opening/viewing the place would show another screen where on which those types of things could be done.

